

phil&teds™

your e3
survival guide

evolution is watching
a baby develop.

revolution is watching
the buggy develop,
from newborn
to upright toddler(s)



welcome to the
adaptable & delightful
world of phil&teds

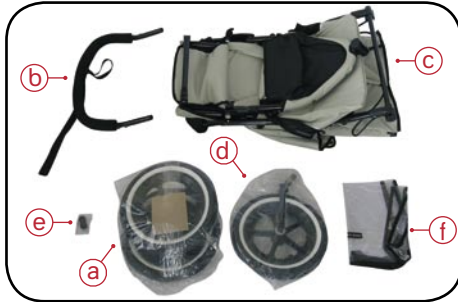
our boxes make a great
distraction for your children while
you get into the nitty & gritty. the
plastic bag, however, does not!

Please read the **WARNINGS** on inside
back cover carefully and help us continue
improving our adaptability range by
returning your warranty form.

nitty & gritty

bits & bobs	2
one: wheeling & dealing	3
two: swivel & swerve	4
three: up & running	5
four: handling	6
five: hooding up	7
six: insert baby	7
ups & downs	
newborn	8
toddler	9
ones & twos	
baby & toddler	10
double	11
tricks & treats	
buggy covers	12
buggy cocoon	13
buggy storage	14
buggy liners	15
cuts & bruises	17
rights & remedies	18
return & relax	19

check your bits & bobs



Open your e3 carton and check that the following bits and bobs are there

- a. 2 x rear wheels
- b. 1 x top handle (with wrist strap attached)
- c. 1 x main buggy
- d. 1 x front wheel
- e. 2 x bungs (attached to front of buggy) – use when bumper bar is not attached (push in silver buttons and remove).
- f. 1 x clear backflap (for use in newborn baby position)

You will need

1 x scissors

1 x adult (or someone who follows instructions!)

Now just follow steps **one** to **six**...

double kit accessory (see page 10)

This is often purchased with your e3 buggy; carton should contain the following bits and bobs



a. 1 x double seat (on frame)

hinge kit contains

- b. 1 x retaining strap (attached to top of double seat frame)
- c. 2 x hinges (R and L - R is as you stand behind the seat with seat facing forward)

one: wheeling & dealing

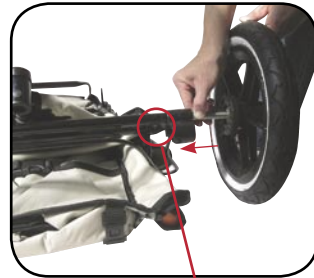
1. Take main buggy and lay flat (sunhood down) as shown.



2. Remove rear wheels from plastic bag (discard bag immediately – it is a suffocation hazard for children).
3. Use scissors to unwrap packaging around wheels (discard unwanted packaging).
4. Take one rear wheel and push in silver button on silver wheel axle.



5. Hold silver button in while inserting wheel axle into buggy frame. Line up silver button so it pops out of hole on frame.



6. Repeat for second rear wheel on opposite side (wheels work on either side).





two: swivel & swerve

1. Lift footwell as far as hinge will allow.

2. Remove front wheel from bag (the rod is greased so watch out for greasy fingers!).



3. Extend black cap out fully on underside of footwell and insert rod on front wheel.



4. Release cap. Your wheel will be in place for use.



to lock the front wheel

1. Align silver button with small hole on inside of front wheel black cap.
2. Turn wheel towards rear wheels of buggy so front wheel is directly underneath footwell and parallel with rear wheels.
3. Cap will then fully close and fix front wheel. Reverse for swivel.

cap open
swivel



cap closed
fixed





three: up & running

1. Turn buggy over onto 3 wheels.
2. Pull up rear frame.

(Note: For double buggy do not lift frame using double seat as you may damage hinges.)

3. Pull up until you hear a resounding 'click'. Ensure that locks are engaged. Seat should now be firmly in place.



4. Ensure levers 'a' and 'b' (autolocks) are properly engaged (as above).

to fold

Make sure children are clear of buggy before folding, unfolding or adjusting the buggy. Watch fingers - injury may result.

1. Press levers 'a' and 'b' (autolocks) on either side at bottom of frame seat with fingers whilst holding frame with palms of hands. (UK - press lever 'b' and pull lever 'a').
2. Let handle drop down, lift buggy by cross bar (parallel to bumper bar) 'c'; front wheel (swivel) folds under frame.
3. Attach webbing under footwell around frame and attach wrist strap (once handle on) around front wheel to help hold buggy folded (use snap fasteners).



Ensure that you hold the main frame of the buggy when lifting in and out of car (as shown).



four: handling

brakes

Always apply brakes when parking your buggy.
Brakes will be off when you unpack your buggy.
Apply brakes before loading children.

Now you're up and running don't let buggy get away from you - use brakes.

1. Stand behind buggy and push brake lever down with foot. This will put brakes on. Push up to take brakes off.



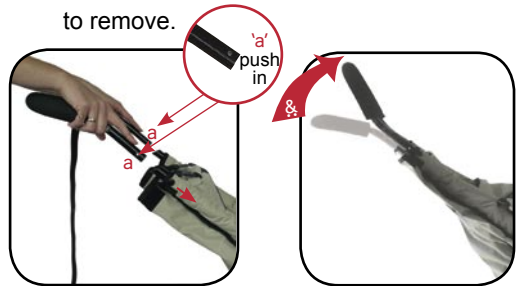
handle

1. Push hood forward to access top of frame.
2. At top of seat push down fabric to expose top of frame. Remove plastic covers (this is for packing purposes only).
3. Take top handle and push in silver buttons on either side of handle 'a'.

4. Line up handle with holes at top of frame.
5. Push handle in until you hear a clear 'click'. Ensure buttons pop through frame on both sides. Test drive buggy with handle in this position.

If you're not happy with lower handle setting adjust to higher setting:

6. Push in silver buttons poking through on sides of top frame and pull handle to remove.



7. Turn handle over and push in silver buttons and re-insert into top of frame. Ensure buttons pop through frame on both sides.

Safety Wrist Strap - Your buggy can be free wheeling without the brakes so the safety wrist strap should be worn at all times when pushing the buggy. Just loop it round your wrist.



five: hooding up

1. Pull up seat fabric and attach to lower snaps on handle – both left and right side.
2. Attach snaps on back of sunhood to higher snaps on handle, both left and right sides.



3. Move to front of buggy and secure snaps on front of sunhood to seat.



Note that the windows in the hood are lined with a sun mesh of a lower shade factor than buggy fabric. Always use sun cream and clothing for protection of children in direct sunlight.



six: insert baby

Apply brakes and insert baby using safety harness. (Ted stood in for baby!)

1. Unclip 4 buckles on breastplate (circled in red) and place baby in buggy.
2. Adjust upper straps to fit snugly on baby's shoulders.
3. Breastplate should sit snugly on your baby's chest. Adjust side straps until it sits in correct position. (You should be able to fit 2 average size fingers between straps and baby.)
4. Adjust crotch strap length (under or over webbing loop) for a comfortable fit.



WARNING: Ensure harness is used and properly adjusted at all times.

newborn buggy

(carry a newborn baby)

1. With buggy set up ready to go, apply brakes.
2. Undo 2 clips at back of seat, 'a' and 'b'.



3. Undo clips 'c' and 'd' at top of seat base and push base corners down until it is almost flat.



4. Undo zips fully on either side of seat base for a completely flat newborn bed.



5. Lie baby flat in newborn position, facing forward, and secure baby firmly with adjusted safety harness.

using the clear plastic back flap

1. Attach clear plastic back flap using hook/loop tape at top, '1', and sides, '2' and '3'.



The back flap can be rolled up and held at top using strip of hook/loop tape at top.

WARNING: Never allow the plastic to fall over the child.

toddler buggy

(carry a child)

This position is generally comfortable for a child from 3-6 months, once child is strong enough to support its head.

Setting up from newborn baby position:

1. Remove and store clear plastic back flap.
2. Do up zips on either side of seat base.
3. Move behind buggy and invert seat base so that clips at top of base show.
4. Push up and do up 2 clips at back of seat.



5. Attach clips at top of seat base to back of seat fabric.

recline seat

1. Unzip zips inside seat to recline.



This position is not recommended for children under 6 months. Newborns need to lie flat – refer to newborn buggy instructions.

Note that it is easier to zip up seat without a child in buggy!

baby & toddler buggy (carry a newborn baby & child)

To use **baby & toddler** position requires purchase of double kit accessory.

Double seat height can be adjusted by undoing snaps on back of double frame, sliding down fabric and reattaching to lower set of snaps.

Each plastic hinge is specific to right or left side of double seat and is marked L or R. (Left and right are your left and right when standing behind double seat with it facing forward).

To attach retaining strap:

1. Remove double seat from buggy or carton.
2. Remove double frame from fabric sling.
3. Slide retaining strap loop onto double frame, and move strap to top of frame.
4. Slide fabric back onto sling.

Setting up the baby & toddler buggy:

1. Ensure that buggy is in newborn position. Put brakes on.
2. Remove bumper bar from front of buggy by pressing silver buttons in on side tubes.
3. Insert hinges into double seat - L and R specific with hinges facing towards buggy (as shown).
4. Insert double seat into side tubes using plastic hinges ensuring silver buttons engage through buggy frame holes.



5. Double seat will sit on main frame of buggy.

To attach retaining strap on double seat:

1. Undo snaps at top of sunhood.
2. Push sunhood forward.
3. Attach retaining strap at back of double seat around main buggy frame using clip.
4. Reattach sunhood snaps.

Buggy can be folded in this position.

WARNING: Never use baby & toddler buggy without the retaining strap.

double buggy

(carry 2 toddlers)

1. Start with toddler position.
2. Ensure hinges are removed from double seat.
3. Align tubes with supports on back of buggy frame.
4. Push in silver buttons and slide on

ensuring buttons pop through holes on frame.



Load heavier toddler in front seat first. Then place lighter toddler in double seat at back. Always unload rear toddler first.

Never use double seat without a toddler in front seat.



buggy covers

stormy weather & uv sunny days

1. Unfold cover carefully.
2. Place over sunhood. Attach around handle using snaps on each side of cover.
3. Attach cover to lower frame using snaps on each side of buggy.

Note that uv sunny days also has a mesh backflap - apply in the same way as the clear plastic backflap for newborn buggy.



double stormy weather & uv sunny days

1. Unfold cover.
2. Place over sunhood and attach using the snaps around handle and snaps at footwell.
3. Press together snaps at rear of cover, forming a roof over rear double seat.

Fold/unfold covers carefully - plastic may harden and crack when cold.



coming soon!

pollution solution

The pollution solution buggy cover is made from a special mesh that protects baby from the fine microns & particle matter in the city air. Now, doesn't that make you breathe easier?

cars, clothes
or kids - you
can never
have too many
accessories

buggy cocoon

e3 cocoon

The cocoon is a light, portable carry-cot which fits quickly and easily in buggy, so you can move a sleeping child to and from buggy with no bother or fuss.

1. With buggy set up ready to go, apply brakes.
2. Unzip cocoon top and make baby comfortable inside.
3. Set-up buggy in baby buggy position and lie cocoon inside.
4. Face baby either towards or away from you.
5. Clip cocoon to buggy using buckles on each side of buggy.



buggy storage

blazing saddles

1. Unpack and use hook/loop tape on back to attach to side of buggy frame.
2. Repeat for other side.



hangbag & belt

1. Attach round buggy handle using buckle and tighten straps.
2. Can also be used around waist - adjust for comfort on hips.



e3 travel bag

1. Remove buggy wheels (and rear guards) to fit buggy into bag.



Can fit buggy and double kit.

bacpac X

Put it on your back or attach it to your buggy.

1. Remove 2 straps looped through D rings, 'a' and 'b', at top of bacpac.
2. Attach clips on straps to bacpac D rings, 'a' and 'b', and attach straps around buggy handle using snaps.
3. Use hook/loop tape on bottom of 2 shoulder straps to attach bacpac to either side of buggy frame.
4. Bottle/snack holder clips into holder on buggy side (right hand side when standing at back of buggy).



buggy liners

buggy bunny

1. Place in buggy and feed harness straps through gaps.



woolly & warm

1. Feed harness straps through slots on rear of liner (cut new slots as required).



snuggle & snooze

1. Feed harness straps through slots on rear of sleeping bag.



race seat

1. Feed harness shoulder straps through D rings at top of race seat.



sponge ted

1. Place in buggy and feed shoulder harness straps through slots on sponge ted.





smartbuggy™



metoo™



metro

adapt & survive!™



escape

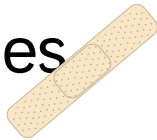


T2



tott

cuts & bruises



cleaning & caring for your e3

unlike children, your e3 likes to stay clean.

e3's coat

The fabric is backed with a water-resistant coating. Brush off dirt. More intense cleaning can be done by hand, in warm water, using a mild natural soap. Rinse out soap. Do not use detergents or bleach. Air dry. Don't leave the e3 out in the sun - the fabric is fade resistant but not fade proof (just like your kids!).

e3's body

We recommend that dirt is brushed off the frame and wheels regularly. Clean with a non-abrasive household cleaner and soft cloth. Wash off sand and salt after beach activity. (How would you like it if someone left sand in your knickers!!) Always dry frame if wet (no one likes soggy knickers!).

tyres & inner tube

The valve is car-size. We recommend 20 - 22 psi. Releasing air gives a softer ride, but lower pressure reduces tread life. New

inner tubes and tyres are generally available (21/4" x 121/2" tyre) from your dealer, cycle or specialist wheel shops. Standard tyre kits can repair punctures. A flat tyre can result from grit holding the valve open; to check: inflate tyre, deflate rapidly, and re-inflate. Tyres and tubes are not under warranty. Do not over inflate.

rubber covers & grip

Take care to avoid damage to the foam rubber. To replace: undo snaps; depress the silver buttons and remove frame part. Replace, using soapy water for lubrication. Replace frame part; ensure silver buttons engage. The foam rubber is not under warranty.

inspect & maintain

Moving parts may need periodic lubrication. Inspect essential components for fraying (esp. webbing straps and safety harness), wear (esp. auto-locks, snap fasteners, button springs, tyres, plastic parts, zips and moving parts), security (esp. autolocks and caps which must not be loose) and freedom of movement (esp. wheels, nuts). Excessive wear can reduce effectiveness and safety.

rights & remedies

our warranty and service policy

We want to give owners confidence in the quality of our products. They are warranted against defects in materials and workmanship for one year from the date of purchase.

If the product has a manufacturing fault we will repair it free of charge. If not practical to repair it we will, at our discretion, replace the part in question*. If the product fails due to wear and tear, accident, neglect or negligence, or is outside the one year warranty, we will happily repair it for a reasonable charge.

details of warranty

Who is covered? Original purchaser buying new product from an authorised dealer. Proof of purchase is required.

What is covered? Workmanship or materials that are deemed faulty, providing the e3 has, at all times, been used in normal conditions, in accordance with the instructions and properly maintained.

What is not covered? Second hand product. Modified product. Poorly maintained product.

Normal wear, fading and fabric cuts.

Improper use (by way of example): abnormal use; not following instructions; child left unattended; safety harness not used; excessive load; transport damage i.e. airline or any freight damage.

Customer costs within warranty. The customer is responsible for any inwards freight charge to return the product to the manufacturer or its representative for warranty and or service.

Customer costs outside of warranty. Where proof of purchase is not provided or the product is outside of the one year period. The manufacturer (or agent) reserves the right to charge a service fee and/or charge for parts replaced/repared. A return freight charge may also apply.

Exclusions. Any consequential loss or damage to any person or property directly or indirectly as a result of using the product.

Who do I contact? Please discuss any warranty or service queries with your store of purchase. You will be required to show proof of purchase. They will inform you of the next step.

* The consumer may have additional rights in some countries or states.

Name

Address

Phone

Email

Just a few extra details to help us
adapt & survive!

Your age?

under 25 25-34 35-40 40+

Number of children

1 2 3 3+ soon!

Their ages?

How did you hear about us?

Which most excellent product did you buy?

- e3 twin escape e3
 smartbuggy metro T2
 accessories metoo bebe
 e3 double kit pepe tott

Date of purchase? / /

Rate from 1-10 how likely you would be to
recommend this product to someone else?

1 2 3 4 5 6 7 8 9 10

Why?

Any general suggestions?

Can we inform you of any new products
and specials? yes no

affix
stamp
here

phil&teds™

102-112 daniell street
newtown
wellington 6002
new zealand

warnings

Keep with your buggy for future reference. Injury may result if you do not follow all safety precautions. Injury may result from improper use.

WARNING: Never leave children unattended, it may be dangerous. Take extra care with any child asleep in the buggy.

WARNING: Ensure that all locking devices are engaged before use.

WARNING: Any load attached to the handle affects the stability of the vehicle.

Do not hang luggage or carry extra children on the buggy. Do not allow a child to stand on the seat. Do not carry extra weight over that allowed by the instructions, this may make the buggy unstable. Do not place more than 3kg/7lbs in the parcel tray.

WARNING: Always use the safety harness to avoid serious injury from falling or sliding out. Always secure all safety harness straps. Ensure the safety harness is correctly fitted, adjusted and securing child firmly. Make sure children are clear before folding, erecting or adjusting the buggy.

WARNING: Never use baby & toddler buggy without double seat retaining strap engaged.

WARNING: Apply brakes when you park the buggy. Apply brakes when loading or unloading children.

WARNING: Buggy in single or baby & toddler configuration is intended for children up to 4 years or maximum weight of 40kg/88lbs. In double configuration the recommended max load 25kg/55lbs in front seat and 15kg/33lbs in rear seat.

WARNING: Do not push a child in the rear seat of a buggy without a heavier child being in the front seat. Do not modify the buggy or use accessories not designed for it. They may be unsafe.

WARNING: Care should be taken if buggy is used on stairs or escalators.

WARNING: The buggy should not be used near an exposed flame.

WARNING: The buggy is not suitable for running or skating.

If required, use the D-rings on the waist strap to attach a safety harness conforming to BS 6684.

adapt & survive!™

safe & sound

we've attained the following safety standards as product safety is paramount to us:

BS 7409:1996

AS/NZS 2088:2000

ASTM F833-01

head office +64 (4) 380 0833

fax +64 (4) 380 0137

address 102-112 daniell street
wellington new zealand

visit www.philandteds.com

Phil & Teds Most Excellent Buggy Co Ltd (phil & teds), phil and teds, the phil & teds logo, the shapes and designs of the products and the adapt & survive logo are global trademarks of Phil & Teds New Zealand Limited. Phil & Teds New Zealand Limited is the owner of all past, present and future intellectual property used and developed in relation to the business and reserves all rights in relation to its intellectual property and the presentation of it.
© phil & teds most excellent buggy company ltd