

UTILITY
TRANSPORT
COVERAGE

Jeep® Liberty® 3-Wheel Stroller Series
Instructions

Jeep®
by Kolcraft


 **WARNING**

Your child's safety depends on you. Proper stroller usage cannot be assured unless you follow these instructions.

DO NOT USE STROLLER UNTIL YOU READ AND FOLLOW THE MANUFACTURER'S INSTRUCTIONS.

IMPORTANT SAFETY INFORMATION:

- **NEVER LEAVE YOUR CHILD UNATTENDED WHILE IN STROLLER.** Accidents can happen quickly while your back is turned. You must always keep your child in view while your child is in the stroller, even when sleeping. Do not use this product as a bed. Your child may become tangled in straps or pads and suffocate.
- To prevent choking hazard, remove and discard all packing before using this product.
- **Always use restraint system to keep child from standing up or falling out of the stroller. Use this harness at all times.** Do not use product without full 5 point Harness Restraint. Removing the shoulder straps will not adequately restrain child.
- Always balance the weight of the stroller evenly.
- **Do not use any infant car seat with this stroller. Serious injury may occur.**
- This is **NOT AN EXERCISE STROLLER!** Do not use this product while running, jogging, in-line skating or participating in other athletic activities.
- **SUFFOCATION HAZARD:**
 - To avoid suffocation or strangulation, always use restraint system when using weather boot.
 - Never leave child unattended while using weather shield. Only use with this product. When using weather shield, canopy must be open. **DO NOT** leave child in sun under weather shield, as child may overheat. **ALWAYS** store weather shield out of child's reach in the provided bag. **DO NOT** allow children to play with weather shield, **IT IS NOT A TOY.**
- **Always balance the weight of the stroller evenly.** To prevent the stroller from becoming unstable or tipping:
 - Do not place parcels or accessory items on the stroller canopy, seat, or over the handle.
 - This stroller is designed for one child only.

- 
- Do not put more than 10 lbs (4.54 kg) in the basket.
 - Do not put more than 3 lbs (1.36 kg) in each Saddle Bag.
 - Do not allow children to play with or hang onto the stroller.
 - **Always lock the stroller open before allowing your child in or near the stroller.** This prevents injuries caused by stroller collapsing.
 - **Only use this stroller with children who weigh less than 40 lbs (18.1 kg) & whose head rests below the top of the seat back.** Use by larger children may damage the stroller, or cause a hazardous unstable condition to exist.
 - **Only use this stroller in recline position until child can sit up unassisted.**
 - **Put on all brakes whenever you park the stroller, especially on an incline.** This prevents the stroller from rolling away.
 - **Never use this stroller on stairways or escalators.**
 - **Do not allow child to stand on seat or sit on footrest.**
 - **Always fasten the hood onto the seat back when using the stroller in the reclined position.**
 - **Do not lift by tray or toys.**
 - Do not allow children to climb into stroller unassisted. Stroller may tip over and injure child.
 - Keep wheels at a recommended tire pressure of 35 p.s.i. (241 kPa) or as specified on the tire wall.
 - Only use replacement parts supplied by the manufacturer. If you have a flat tire, you may use a standard bicycle tire repair kit or take it to a bicycle shop to be repaired.
 - **Do not carry extra children or use accessories other than those approved by the vehicle manufacturer.**
 - **The stroller should not be used near an open fire or exposed flame.**
 - **Make sure children are clear of any moving parts if you adjust the stroller, otherwise they may be injured.**

Parts List



Stroller Frame



Brake Assembly with Rear Axle



Rear Wheels (2)



Front Wheel (1)



Footrest



Cargo Bags (2)



Front Tray



16mm Screws (4)



Parent Tray
(Select Models)



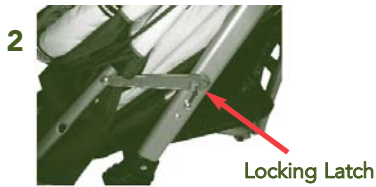
Electronic Toys
(Select Models)



Air Pump
(Select Models)

How to Assemble Your Stroller

To Open Stroller

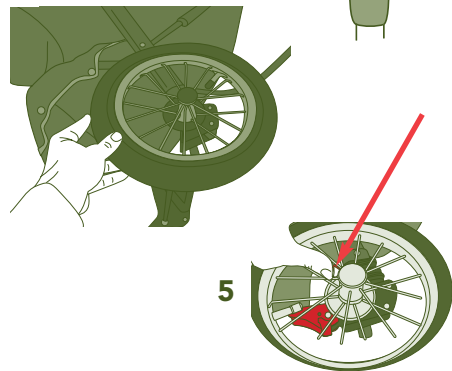
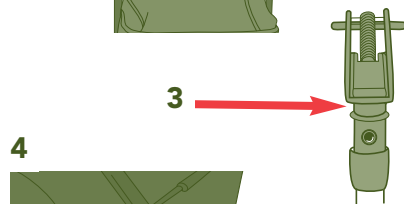
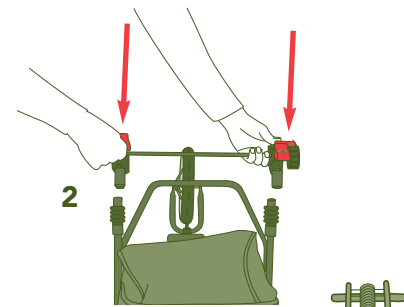


1 Remove any cardboard inserts or plastic ties used to protect the product during shipment.

2 Release the locking latch.

3 Unfold, making sure both side locks snap into place.

To Assemble Rear Wheels



1 Remove and discard protective plastic sleeve from ends of rear axle assembly.

2 Position rear brake assembly as shown, with brake levers pointing towards stroller handle.

3 Push both brake assemblies onto rear leg tubes at the same time until spring loaded buttons click into place.

4 Lay stroller on its side. Slide wheel onto axle.

5 Push down on wheel until you hear a click. Pull up on wheel to make sure it is properly secured. If wheel pulls off, push wheel onto axle again but push metal clip in at the same time. Make sure wheel is secure.

6 Repeat for second side.

TO REMOVE WHEEL. Press metal clip in and pull wheel off.

NOTE: Keep wheels at a recommended tire pressure of 35 p.s.i. (select models).

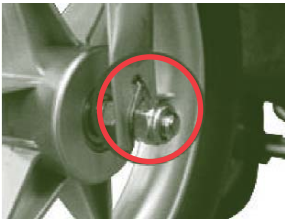
To Assemble Front Wheel

1



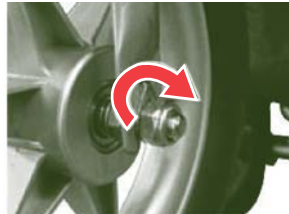
1 Position front wheel between slots in front wheel fork as shown.

2



2 Align hook into hole in front wheel fork.

3



3 Turn the screw nut clockwise with a wrench until it stops.

4 Repeat for the other side.

To Attach Footrest



1 Place stroller back on handle bar.



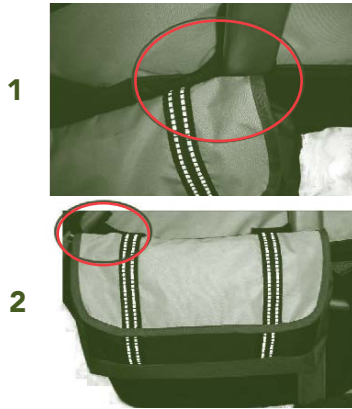
2 Position footrest against stroller frame as shown making sure arches in footrest fit over the metal frame.



3 Align bosses on the footrest to the four holes on the metal frame. If bosses DO NOT line up, footrest on the front wheel is not on correctly. Repeat steps 1-2.

4 Secure footrest into four holes in frame with 16 mm screws using a Phillips screwdriver.

To Attach Cargo Bags

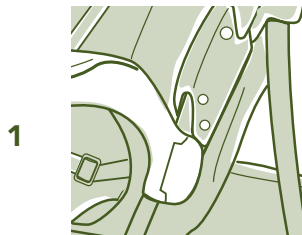


! WARNING

DO NOT put more than 3 lbs. in each cargo bag.

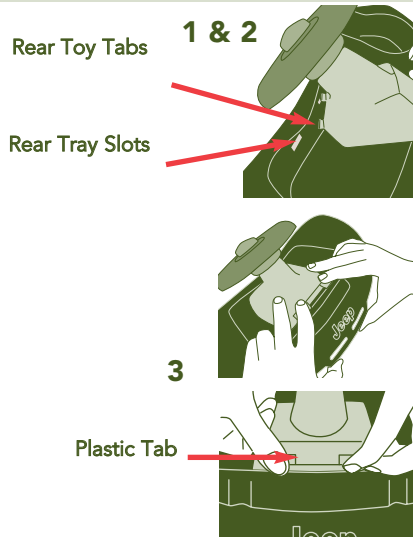
- 1** To attach cargo bags, loop and secure one end of the Velcro strap to the rear leg above the basket as shown.
- 2** Loop and secure other end of the Velcro strap to the metal frame as shown.
- 3** Repeat for second side.

To Attach Front Tray



- 1** Align tray between plastic tabs onto metal tubing as shown.
- 2** Snap tab in place.
- 3** Repeat for second side.

To Attach Non Electronic Toys (select models)

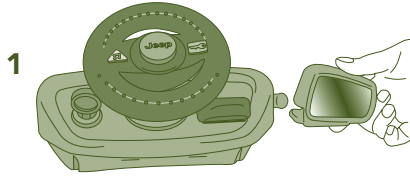


! CAUTION

Toys intended to be assembled by an adult.

- 1** Position toy steering wheel on front tray as shown.
- 2** Align rear toy tabs with rear tray slots. Hook into place.
- 3** Place your thumbs underneath tray and with fingers, snap front portion of toy steering wheel into front tray slots.

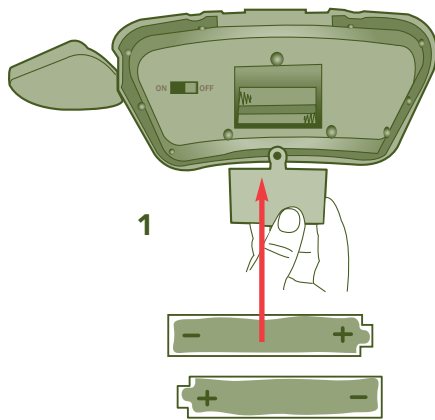
To Assemble Electronic Toys (select models)



- 1 Attach mirror to toy as shown.

CAUTION: For your child's safety, remove the following labels if found on this toy, before use: 1) "Try Me" on front of unit 2) Protective film on mirror.

To Install Batteries in Electronic Toys (select models)

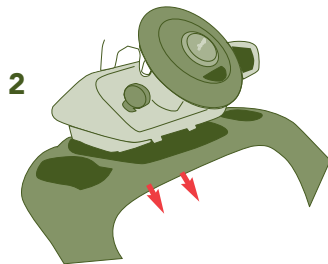


- 1 To insert batteries, use a Phillips head screwdriver to unfasten battery cover. Insert batteries as shown. Requires 2 "AA" batteries (Not Included). Secure battery cover.

- 2 Turn switch to "On" position to play sounds.

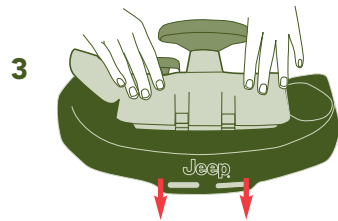
CAUTION: Do not mix old and new batteries. Do not mix alkaline, standard (carbon-zinc) or rechargeable (nickel cadmium). Remove battery(ies) before storing this product for a prolonged period of time.

To Attach Electronic Toys (select models)



- 1 Place electronic toys so that they face the child in the stroller.

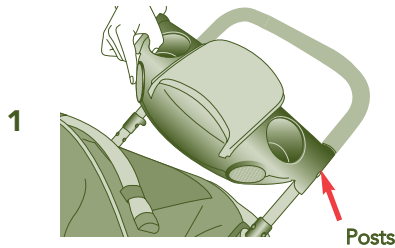
- 2 Tilt toys toward stroller and align tabs with rear tray slots. Lock tabs into slots.



- 3 Press down firmly on front of toys until front tabs lock toys securely in place.

- 4 To remove toys from tray, press down on front tabs to release and pull up on toys.

To Attach Music On The Move® Parent Tray (select models)

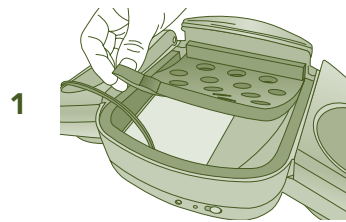


! WARNING

- Loud volume can damage your child's hearing. When turning on music, gradually adjust the volume to a comfortable listening level so child is not startled.
- Do not place more than 3 lbs. in this tray to avoid tipping!
- Do not place hot liquids in this tray. Hot liquids can burn your child.

- 1** To attach Music On The Move®, align tray holes with posts on handle and snap on.
- 2** To remove Music On The Move®, pull each side up and out.

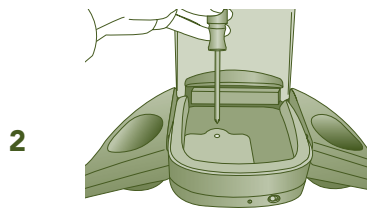
To Install Batteries into Music On The Move® Parent Tray (select models)



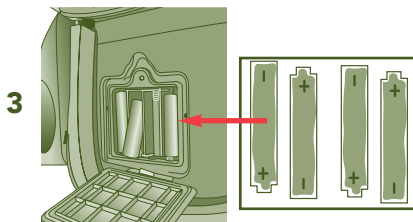
Requires 4 "AA" Batteries (Not Included).

- 1** Lift up the foam padding in the bottom of the unit.

NOTE: Foam is used to reduce skipping & eliminate sliding of your portable unit. If your player does not fit inside, remove foam.



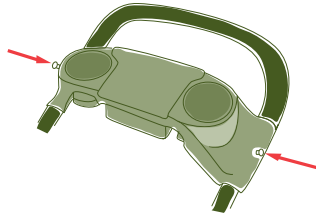
- 2** Use a Phillips screwdriver to remove the battery door.



- 3** Place batteries in the battery compartment as shown.

- 4** Screw the battery door back onto the unit and replace the foam.

To Attach Parent Tray (select models)



WARNING

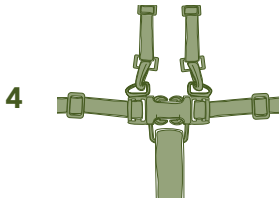
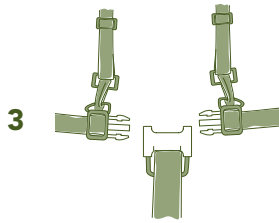
DO NOT place more than 3 lbs. (1.36 kg) in this tray to avoid tipping!
DO NOT place hot liquids in this tray. Hot liquids can burn your child.

- 1 Align tray holes with posts near handle and snap on.

TO REMOVE, pull each side up and out. For cleaning, parent tray is top rack dishwasher safe.

How to Properly Use Your New Stroller

To Secure Child In Stroller



Adjust Restraint System Harness

WARNING

Avoid serious injury from falling or sliding out. Always use restraint system. Do not use product without full 5 point Harness Restraint. Removing the shoulder straps will not adequately restrain child.

- 1 Lock foot brake to keep stroller from rolling.
- 2 Place child in stroller.
- 3 Hook shoulder straps to waist belt.
- 4 To fasten restraint system buckles - push together. Be sure both buckles are fastened to secure child safely.
- 5 To unsnap restraint system buckles - press tabs to release.
- 6 For proper fit, adjust shoulder straps and waist band as shown.


Continued on next page →

TO ADJUST SHOULDER STRAP HEIGHT

NOTE: For a secure fit, straps should be at or below the child's shoulder. Adjust straps to higher position as your child grows.

1 Push buckle through slot as shown. Repeat for second side

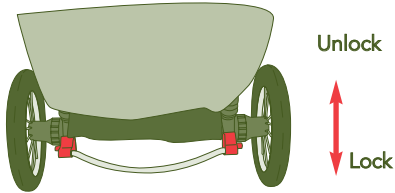
2 From the back side of the stroller, fasten buckles together to secure restraint.



To Operate Brakes

1 TO LOCK BRAKE: Push 1-Touch brake bar down to lock wheels.

2 TO UNLOCK BRAKE: Lift up on brake bar.

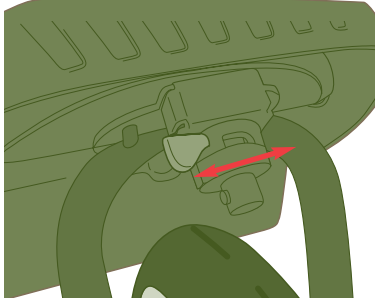


To Operate Swivel Wheel Lock

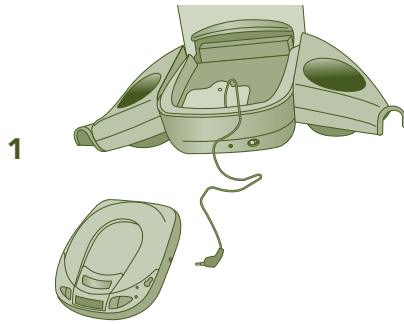
1 LOCK FRONT SWIVEL: Adjust front wheel so that wheel is straight and lock is forward. Push lock to right.

2 UNLOCK FRONT SWIVEL: Push lock to left.

NOTE: On rough surfaces, lock the wheel to keep straight. On smooth surfaces, unlock to allow the wheel to swivel.

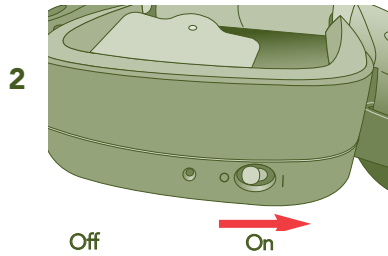


To Operate Music On The Move® Parent Tray (select models)



1

1 Connect the *Music On The Move* plug to the headphone jack of your personal sound system (iPod®, radio, cassette, CD, MP3 or mini disk player).



2

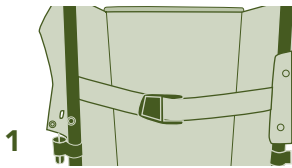
2 Turn on *Music On The Move* by locating the power switch as shown. A red light will indicate that the power is on. Be sure to turn off unit after use so not to drain the batteries.

3 To avoid startling your child, adjust volume on your personal sound system to its lowest level. Turn on your personal sound system and slowly increase volume to a comfortable listening level for you and your child.

NOTE: If sound cuts out or becomes distorted, check your personal sound system battery level. If battery level is okay and sound is still distorted, replace *Music On The Move's* batteries.

DO NOT leave *Music On The Move* in a hot car or outside in the rain.

To Recline Seat



1

! WARNING

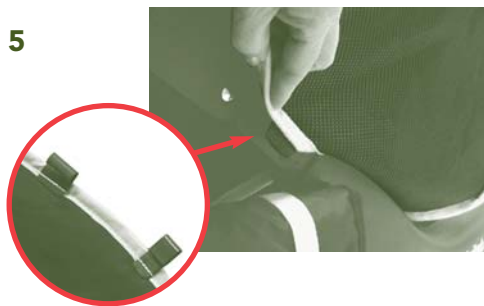
- To avoid finger entrapment or pinching, do not adjust the seat back while child is in the stroller.
- To avoid head entrapment, always fasten canopy to seat back when using rear seat in reclined position.

1 To recline seat, loosen belt.



2 To raise seat back, tighten belt.

To Insert Boot (select models)



WARNING

To avoid suffocation or strangulation, always use restraint system when using weather boot.

- 1 Remove toy from tray.
- 2 Fasten the 3 snaps located under the front of the seat to the corresponding snaps on the boot.
- 3 Place the boot as shown with the bottom of the boot under the seat.
- 4 Fasten the snap around the base of the canopy tube on both sides as shown.
- 5 Fasten 2 hooks onto the siderail of the stroller as shown. Repeat for opposite side.

To Attach Rain Canopy (select models)

! WARNING

SUFFOCATION HAZARD: Never leave child unattended while using this all weather shield. Only use with this product. When using cover, canopy must be open. **DO NOT** allow children to play with shield, **IT IS NOT A TOY.**



- 1** Insert long narrow piece of all weather shield between the parent tray and stroller.



- 2** Pull all weather shield all the way through opening between parent tray and canopy and fasten velcro strips.



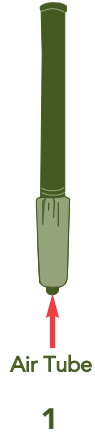
- 3** Anchor front of all weather shield under footrest as shown.

DO NOT leave child in sun under all weather shield as child may overheat.

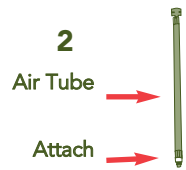
Air Pump Use and Storage (select models)

Keep air pump stored in basket when not in use.

CAUTION: Keep wheels at a recommended tire pressure of 35 p.s.i. (241 kPa).

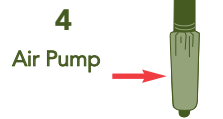


1 Remove air tube from pump.



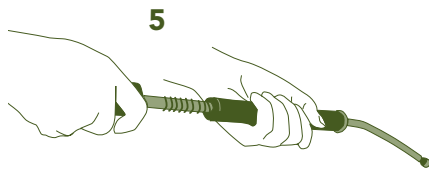
2 Screw air tube to opposite end of pump.

3 Attach air pump to fill tube on tire.



4 Pump air pump until tires are filled to 35 p.s.i. (241 kPa) or as specified on the tire wall.

5 Disassemble pump and store in basket when not in use.



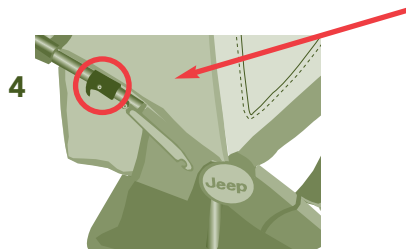
To Fold Stroller

1 Lock brakes.

2 Recline seat.

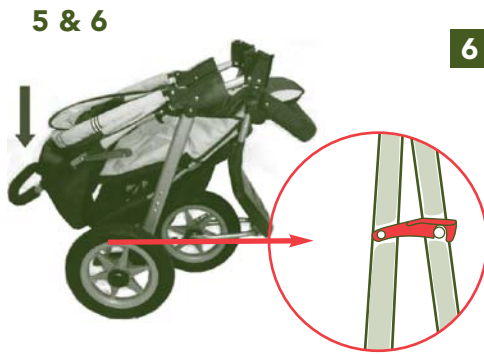
3 Close canopy.

4 Pull up latches on each side of stroller as shown.



5 Push stroller down to fold.

6 Engage locking latch.



Care & Maintenance

- Always store your Jeep baby product in a clean dry place. If exposed to damp conditions, leave fully opened and in a warm environment. Clean woven fabric or vinyl parts with mild soap and water solution. Clean metal parts with a damp cloth and wipe dry. Dry wet stroller with a soft cloth to prevent rusting. Storing a damp stroller will encourage mildew to form.
- Do not leave in the boot of a car.
- Avoid exposure to salt water / sea water, as this may encourage the formation of rust. If stroller is used in this environment, completely clean your stroller afterwards to remove sand and salt from mechanisms and wheel assemblies.
- Should parts of your stroller become stiff, squeak or difficult to operate ensure dirt is not the cause. To keep your stroller running smoothly and avoid squeaking wheels use a silicone or graphite based lubricant. It is important to get it into the axle and the wheel assembly. DO NOT over lubricate, as this will encourage the accumulation of dirt.
- When storing stroller, never stack other items on top of it; this may damage the stroller.
- Periodically check for worn parts, loose screws, torn materials or stitching.
- Replace any damaged parts immediately.

Limited Warranty

Jeep® is a registered trademark of DaimlerChrysler Corporation, and is used under license by Kolcraft®. © DaimlerChrysler Corporation 2007

KOLCRAFT® warrants this product to be free of defects in materials and workmanship, as follows: For a period of ONE YEAR from the date of purchase, KOLCRAFT will repair or replace, at its option, the defective product.

REPAIR OR REPLACEMENT AS PROVIDED UNDER THIS WARRANTY IS THE EXCLUSIVE REMEDY OF THE CONSUMER. KOLCRAFT SHALL NOT BE LIABLE FOR ANY INCIDENTAL OR CONSEQUENTIAL DAMAGES FOR BREACH OF ANY EXPRESS OR IMPLIED WARRANTY ON THIS PRODUCT, EXCEPT TO THE EXTENT REQUIRED BY APPLICABLE LAW. ANY IMPLIED WARRANTY OF MERCHANTABILITY OR FITNESS FOR A PARTICULAR PURPOSE ON THIS PRODUCT IS LIMITED TO THE DURATION OF THIS WARRANTY.

Some regions do not allow the exclusion or limitation of warranties set forth above, so the above exclusions may not apply to you. This warranty gives you specific legal rights, and you may have other rights. We sincerely thank you for your purchase of this KOLCRAFT product.

For further information visit www.kolcraft.com

RECALL WEBSITE:
HELP KEEP YOUR CHILD SAFE. Check www.recall.gov too see if any products you use with your child or any of your child's toys have been recalled.

Personal Record Card

Once in a while, we are less than perfect and one of our products reaches a customer with a problem. In most cases, we can solve your problem with replacement parts. Please contact us before you return one of our products to the store. Once a product is returned, it cannot be resold. The materials and the energy used to make it are wasted.

Please fill in the information in the space provided and attach a copy of your purchase receipt. You will need this information to obtain warranty service.

You can find the Model Number and Date of Manufacture on a sticker located on the rear stroller leg.

For enquires please call Born With Style

PO Box 789 Gladesville NSW 2111
Ph: 1300 885 337 or 02 9816 3837
Fax: 02 9816 3778
www.bornwithstyle.com.au

For warranty repairs and service please call:

Karlisles
Unit 1B, 13-21 Mandible Street
Alexandria NSW 2015
Phone 1300 308 435 or 02 8399 0399
www.karlisles.com.au

To contact the manufacturer directly:

Kolcraft Enterprises, Inc. Consumer Service Department
10832 NC Highway 211 East
Aberdeen, NC 28315
1-800-453-7673 in U.S. & Canada, 1-910-944-9345 outside U.S. & Canada
Eastern Standard Time, 8 am-6:45 pm Monday - Thursday, 8 am-3:30 pm Friday

Model / Style Number: _____

Date of Manufacture: _____

Date of Purchase: _____