

© Copyright 2006 Z43002 rv02 Bugaboo® International BV. The information contained herein is subject to change without notice. Bugaboo® International BV shall not be liable for technical errors or omissions contained herein.

The purchased product may differ from the product as described in this user guide. Our most recent user guides can be requested at our Service departments (see 'comment') or at www.bugaboo.com

bugaboo snow wheels

You have chosen a set of Bugaboo™ snow wheels for your Bugaboo® stroller. These snow wheels are intended for use with the Bugaboo Cameleon, Bugaboo Gecko or Bugaboo Frog. Bugaboo strollers are functional, versatile and comfortable, as are all the Bugaboo accessories. We hope you'll enjoy using your Bugaboo snow wheels.

Please read all instructions before using the Bugaboo snow wheels.

The Bugaboo snow wheels were specially designed with harsh conditions and rough terrain in mind. The large, rubber tires ensure a firm grip on icy roads, and the fixed, no-swivel wheels mean that even snow won't slow you down.

⚠️ WARNINGS

- Read the user guide carefully before you use the product and keep the guide for future reference. Your child's safety may be in danger if you do not review all warnings and follow use and assembly instructions carefully.
- Keep plastic bags and other packing materials that may pose a suffocation hazard away from children. Safely discard these materials as soon as possible.
- Audible 'clicks' must be heard in order to determine that each lock is in its proper position.
- Do not put a child in the stroller when the snow wheels are in an unlocked position.
- Do not drive a stroller (with or without child) with the snow wheels in unlocked position.
- Do not inflate the tires more than 1 bar (15 psi).

before starting

Check the contents of the package against the list below. If anything is missing, please contact your retailer. The package for your Bugaboo snow wheels package should contain:

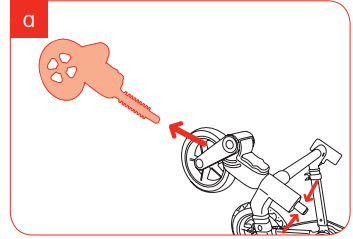
- 1 set of Bugaboo snow wheels
- 1 storage bag
- 1 user guide

fitting the snow wheels

The wheels on all Bugaboo strollers can be interchanged simply and quickly.

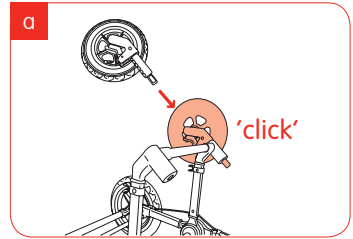
step 1

- a** First, remove the swivel wheels from your Bugaboo stroller. Each swivel wheels each has a round button, which protrudes from the top of the holder and each button has two sprung lips. Push the two lips inwards and slide the swivel wheel from the holder.

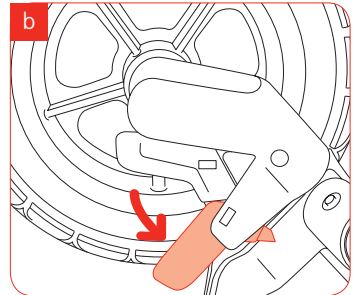


step 2

- a** To attach the Bugaboo snow wheels, simply slide them into the corresponding wheel holder until you hear a 'click' and the lips are locked in place.



- b** Ensure that the wheel is on the correct side of the stroller. The locking mechanism should be facing inwards on the stroller. Refer to the sticker diagram on the front of each snow wheel.



- c** The wheels should be fixed, to prevent them from swiveling. Check that the levers are in the locked position - the lever should be moved up towards the wheel holder.

folding your bugaboo stroller

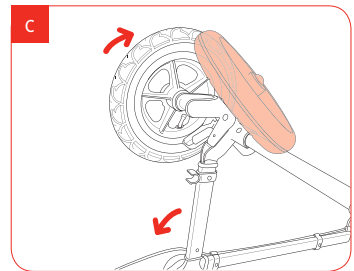
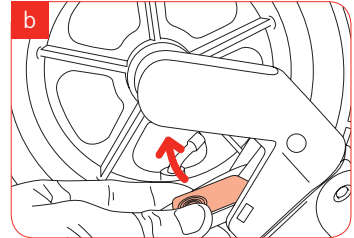
step 1

eng
10

a. To fold your Bugaboo stroller with the snow wheels still attached, unlock each wheel by pressing the thumbprint tab below the lever inward.

b. This releases the lock so that you may then turn the lever to unlock the wheels from their fixed position.

c. Once unlocked, swivel the wheel around to the front of the stroller. You can now fold the chassis as you would normally. You can only fold your stroller when the snow wheels are in this position.



inflating the tires

step 1

- Unscrew the valve's black cap.
- Use an ordinary bicycle pump to inflate the pneumatic tires.
- To deflate the tires, press the inside of the wheel's valve. This should release the air.

important information

- Do not leave the valve caps lying around. Make sure children do not put them in their mouths.
- The pneumatic tires provide maximum suspension when inflated to the correct pressure. Do not inflate to more than 1 bar (15 psi). When inflated to the correct pressure, you will be able to easily depress the tire with your finger. You may also use the Bugaboo pressure indicator that came with your stroller. If you do not have one, it can be obtained from our Service department (See 'comment' section).

cleaning

Clean the Bugaboo snow wheels with lukewarm water and a soft towel. Do not lubricate the wheel bearings.

comment

We are always trying to improve our Bugaboo products, so we are interested in your feedback about such things as design, user friendliness, materials and instructions.

Write to us at the following addresses:

Europe, Asia and Australia:

Bugaboo Service
Postbus 1299
1000 BG Amsterdam
The Netherlands
service@bugaboo.com

North America:

Bugaboo Service
P.O. Box 1552
Old Chelsea Station
New York, NY 10013
USA
service@us.bugaboo.com

warranty (not for usa and canada)

As the manufacturer, Bugaboo International BV, which has its principal place of business in Amsterdam (hereinafter: "Bugaboo") supplies the Bugaboo snow wheels (hereinafter: "product") under warranty, subject to the following conditions:

1. The warranty period is 24-months, from the date of purchase. The warranty period shall never be extended, even in the event of repairs being made.
2. This warranty is valid all over the world, except in the United States of America and Canada.
3. The warranty provides a right to repair and specifically not to a product's exchange or return.
4. Bugaboo shall bear the expense and risk of transport from and to the retailer (hereinafter: "the retailer") where you purchased the product, provided the repair is covered by warranty.
5. The warranty may only be invoked if you provide Bugaboo with the following, along with the defective product:
 - a copy of the dated receipt of purchase, and
 - a clear description of the complaints.
6. The warranty is not transferable and may therefore only be invoked by the first owner.
7. The warranty does not affect any statutory rights you may have, for example the right to hold the retailer accountable for defects.

no warranty will be provided in the following circumstances:

- If you have made or arranged for modifications or repairs to be made without written permission first having been received from Bugaboo or the retailer.
- Defects resulting from neglect or an accident and/or from any use or maintenance other than that indicated in the user guide.
- If the serial number has been damaged or removed.
- Damage to the product caused by normal wear.

important

- The product is covered by a 24-month warranty from the date of purchase.
- In the event of a defect, you are requested to first contact your retailer. If the retailer is unable to repair the defect, you can contact Bugaboo. - Keep the user guide and purchase receipt in a safe place.

limited warranty (USA and Canada only)

At Bugaboo, we make innovative, high quality products for babies and children. Bugaboo North America, Inc. warrants this product to be free from defects in material and workmanship existing at the time of manufacture for a period of two years from the date of initial purchase. Your original dated sales or delivery receipt showing the date of purchase is your proof of purchase. If such a defect is discovered during the Limited Warranty period, we will, at our sole option, repair or replace your product at no cost to you. Some replacement parts may be available for purchase after this limited warranty expires.

1. This Limited Warranty is only valid and applicable to purchases of the product from authorized Bugaboo retailers in the states and provinces of the United States and Canada.
2. This Limited Warranty extends only to the original retail purchaser of this product and is not transferable to anyone who obtains ownership of the product from the original retail purchaser.
3. This Limited Warranty does not cover claims resulting from misuse, failure to follow the instructions on installation, maintenance and use, abuse, alteration, involvement in an accident, and normal wear and tear.
4. This Limited Warranty gives you specific legal rights, and you may have other rights that vary from state to state or province to province.
- 5. This limited warranty is exclusive and in lieu of any other warranty, written or oral, including but not limited to any express warranty of merchantability or fitness for a particular purpose. The duration of any implied warranties, including any implied warranty of merchantability or fitness for a particular purpose, is expressly limited to this limited warranty period.**
- 6. The customer's exclusive remedy for breach of this limited warranty or of any implied warranty or of any other obligation arising by operation of law or otherwise shall be limited as specified herein to repair or replacement, as our sole option. In any event, responsibility for special, incidental or consequential damages is expressly excluded.**
7. Some states or provinces do not allow limitations on how long an implied warranty lasts; therefore, these above limitations and exclusions may not apply to you.
8. Some states or provinces do not allow an exclusion or limitation of special, incidental or consequential damages, therefore, that limitation or exclusion may not apply to you.

For warranty service or replacement part information:

- USA: 800-460-2922
- Canada: 800-355-5560
- Outside USA and Canada: Please contact place of purchase for warranty service.

Some replacement parts may be available for purchase after this limited warranty expires. For details, please visit us at www.bugaboo.com or contact us in the United States at 800-460-2922, in Canada at 800-355-5560 or e-mail: service@us.bugaboo.com.